

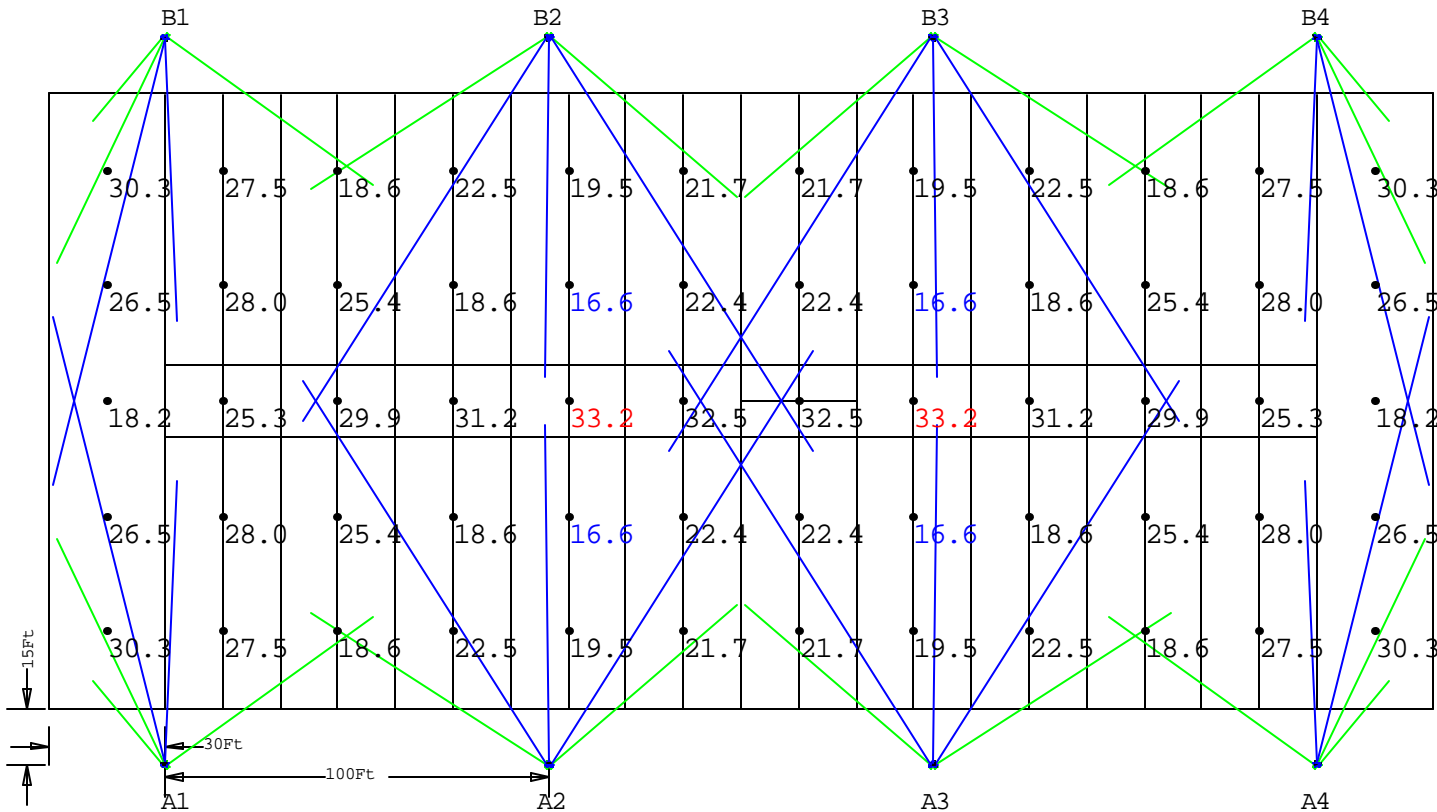
NOTES

- 1) EXACT MOUNTING DETAILS TO BE DETERMINED AT JOBSITE BY OTHERS.
- 2) CALCULATIONS DO NOT SHOW THE EFFECT OF SHADOWING CAUSED BY OBJECTS WITHIN AREA.

FOOTBALL TYPICAL  
CLASS IV, 8 POLE, 60' MTG. HT.  
REF. NO. FBIV86015

Numeric Summary - Basic										
Project: All Projects										
Label	CalcType	Unit	Avg	Max	Min	Avg/Min	Max/Min	# Pt	CV	Description
FOOTBALL	Illuminance	Fc	24.18	33.2	16.6	1.46	2.00	60	0.20	fbIII6 3 feet above grade

Luminaire Schedule						
Project: All Projects						
Symbol	Qty	Label	Description	Lumens	LLF	Filename
F2	20	F2	ABS 9000-VLM-1000MH	110000	0.720	9000VLM1000MH.IES
F3	20	F3	ABS 9000-VLW-1000MH	110000	0.720	9000VLW1000MH.IES



View\_1:Plan Rotated 0 Tilted 0  
Scale: 1 inch= 50 Ft.



ABS LIGHTING-This layout provided using manufacturer's photometrics. Variations between installation and this layout will result in variations from footcandle levels shown.