




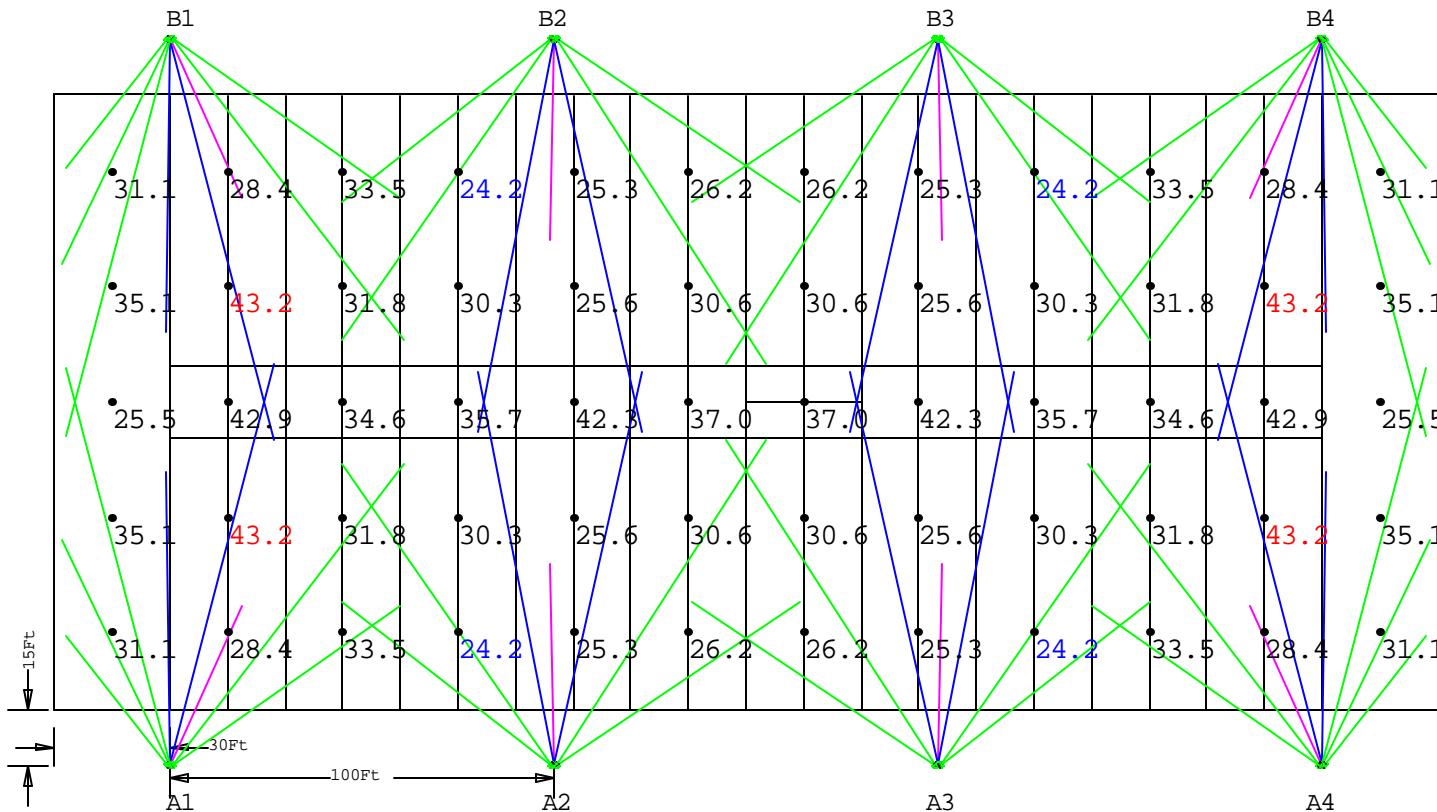
NOTES

- 1) EXACT MOUNTING DETAILS TO BE DETERMINED AT JOBSITE BY OTHERS.
- 2) CALCULATIONS DO NOT SHOW THE EFFECT OF SHADOWING CAUSED BY OBJECTS WITHIN AREA.

FOOTBALL TYPICAL
 CLASS III, 8 POLE, 60' MTG. HT.
 USING 3100 SERIES
 REF. NO. FBIII8601531

Numeric Summary - Basic										
Project: All Projects										
Label	CalcType	Unit	Avg	Max	Min	Avg/Min	Max/Min	# Pt	CV	Description
FOOTBALL	Illuminance	Fc	31.62	43.2	24.2	1.31	1.79	60	0.18	fbIII6 3 feet above grade

Luminaire Schedule						
Project: All Projects						
Symbol	Qty	Label	Description	Lumens	LLF	Filename
	8	F11	ABS 3100-HWR-1000MH	110000	0.720	3100HWR400MH.IES
	16	F7	ABS 3100-HM-1000MH	110000	0.720	3100HM1000MH.IES
	36	F8	ABS 3100-HMR-1000MH	110000	0.720	3100HMR1000MH.IES



View_1:Plan Rotated 0 Tilted 0
 Scale: 1 inch= 50 Ft.

ABS LIGHTING-This layout provided using manufacturer's photometrics. Variations between installation and this layout will result in variations from footcandle levels shown.