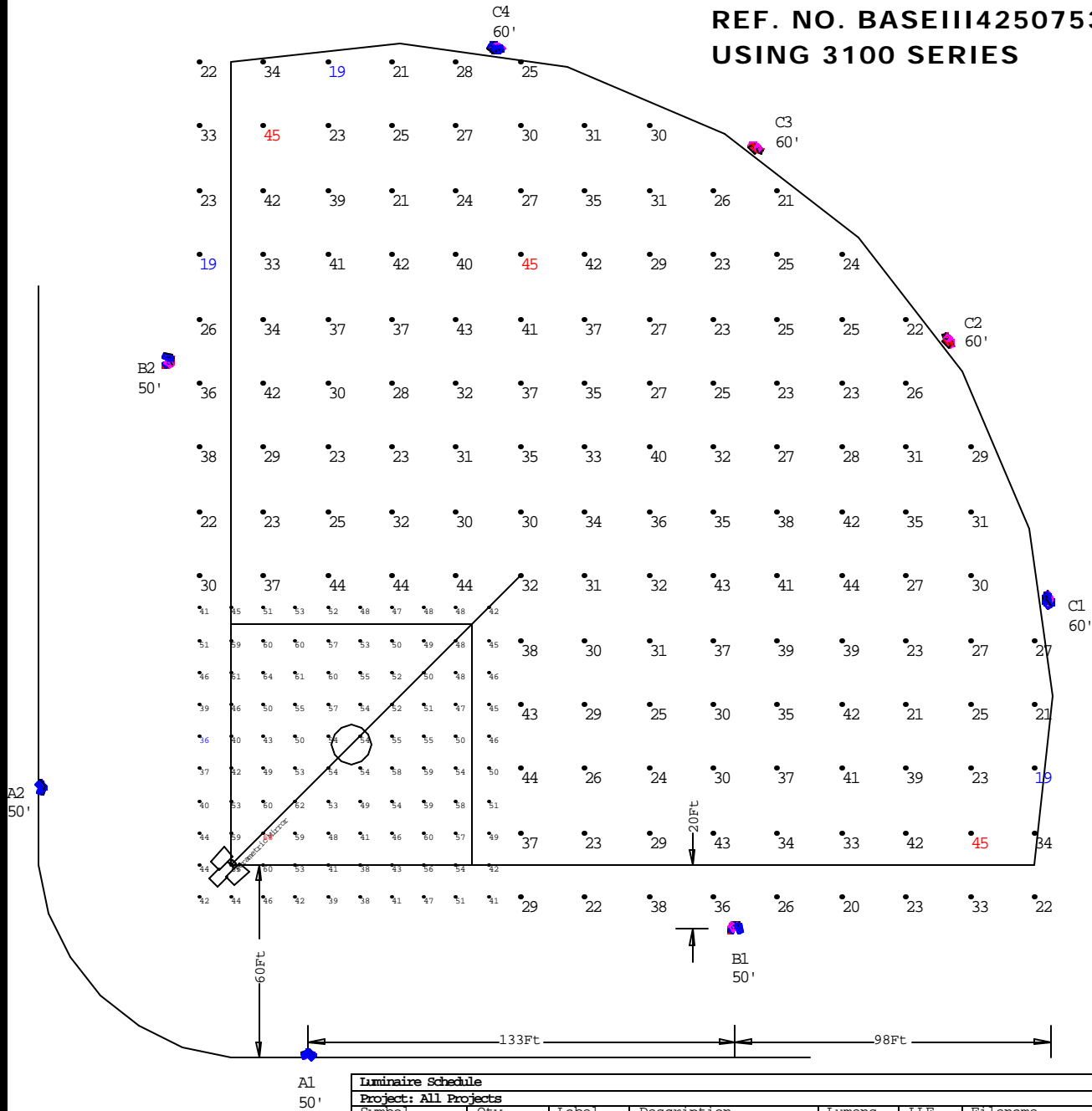


**NOTES:**

- 1) EXACT MOUNTING DETAILS TO BE DETERMINED AT JOBSITE BY OTHERS.
- 2) CALCULATIONS DO NOT SHOW THE EFFECT OF SHADOWING CAUSED BY OBJECTS WITHIN THE AREA.

**BASEBALL TYPICAL  
PONY LEAGUE  
CLASS III, 4 OUTFIELD POLES  
250' RADIUS, 75' BASELINE  
REF. NO. BASEIII42507531  
USING 3100 SERIES**



Luminaire Schedule						
Project: All Projects						
Symbol	Qty	Label	Description	Lumens	LLF	Filename
	30	F7	ABS 3100-HM-1000MH	110000	0.720	3100HMI000MH.IES
	14	F9	ABS 3100-HN-1000MH	110000	0.720	3100HN1000MH.IES
	18	F11	ABS 3100-HWR-1000MH	110000	0.720	3100HWR400MH.IES

Numeric Summary - Basic										
Project: All Projects										
Label	CalcType	Units	Avg	Max	Min	Avg/Min	Max/Min	# Pts	CV	Description
INFIELD	Illuminance	Fc	50.36	68	36	1.40	1.89	100	0.14	readings taken at 3' afg
OUTFIELD	Illuminance	Fc	31.41	45	19	1.65	2.37	143	0.20	readings taken at 3 ft. afg

View\_1:Plan Rotated 0 Tilted 0  
Scale: 1 inch= 50 Ft.

ABS LIGHTING- This layout provided using manufacturer's photometrics. Variations between installation and this layout will result in variations from footcandle levels shown.



# Fixture Breakdown per Pole

File: BASEIII42507531

3100-HM-1000MH	3100-HMR-1000MH	3100-HN-1000MH	3100-XN-1000MH	3100-HWR-1000MH
F7	F8	F9	F10	F11

Pole	Mtg. Ht.	F7	F8	F9	F10	F11
A1	50	6		1		1
A2	50	6		1		1
B1	50	3		4		2
B2	50	3		4		2
C1	60	6				3
C2	60			2		3
C3	60			2		3
C4	60	6				3
<b>Total</b>		<b>30</b>	<b>0</b>	<b>14</b>	<b>0</b>	<b>18</b>