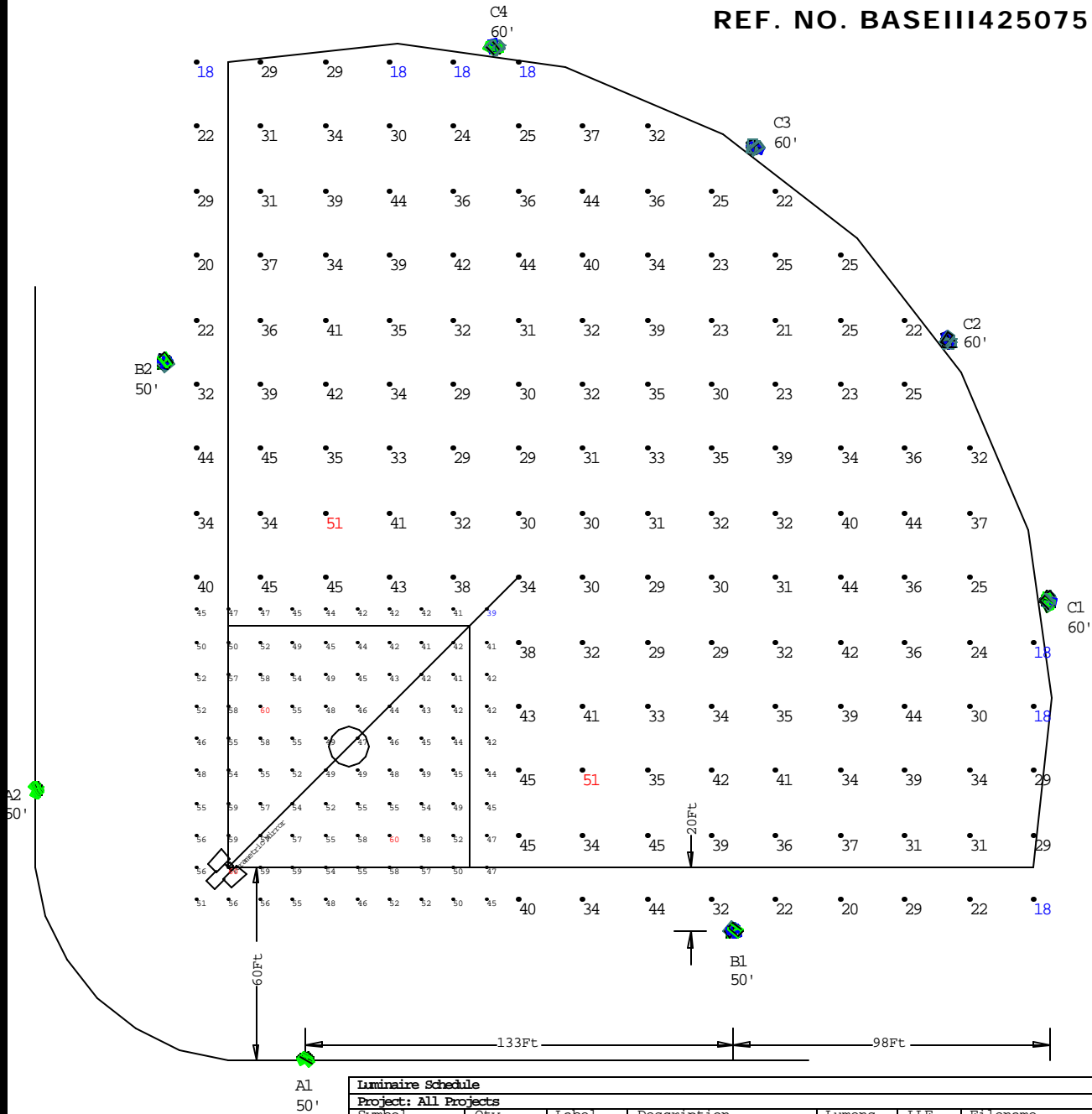


NOTES:

- 1) EXACT MOUNTING DETAILS TO BE DETERMINED AT JOBSITE BY OTHERS.
- 2) CALCULATIONS DO NOT SHOW THE EFFECT OF SHADOWING CAUSED BY OBJECTS WITHIN THE AREA.

**BASEBALL TYPICAL
PONY LEAGUE
CLASS III, 4 OUTFIELD POLES
250' RADIUS, 75' BASELINE
REF. NO. BASEIII425075**



Luminaire Schedule						
Project: All Projects						
Symbol	Qty	Label	Description	Lumens	LLF	Filename
	18	F2	9000-VN-1000MH	110000	0.720	lkmh3030.ies
	34	F3	9000-VM-1000MH	110000	0.720	9000VM1000MH.IES
	14	F6	9000-VW-1000MH	110000	0.720	9000VW1000MH.IES

Numeric Summary - Basic										
Project: All Projects										
Label	CalcType	Units	Avg	Max	Min	Avg/Min	Max/Min	# Pts	CV	Description
INFIELD	Illuminance	Fc	50.04	60	39	1.28	1.54	100	0.12	readings taken at 3' afg
OUTFIELD	Illuminance	Fc	33.09	51	18	1.84	2.83	143	0.19	readings taken at 3 ft. afg

View_1:Plan Rotated 0 Tilted 0
Scale: 1 inch= 50 Ft.

ABS LIGHTING- This layout provided using manufacturer's photometrics. Variations between installation and this layout will result in variations from footcandle levels shown.



Fixture Breakdown per Pole

File: BASEIII425075

9000-XS-1000MH	9000-VN-1000MH	9000-VM-1000MH	9000-VW-1000MH
F1	F2	F3	F6

Pole	Mtg. Ht.				
A1	50		1	8	
A2	50		1	8	
B1	50		5	4	
B2	50		5	4	
C1	60		1	5	3
C2	60		2		3
C3	60		2		3
C4	60		1	5	3
Total			18	34	12