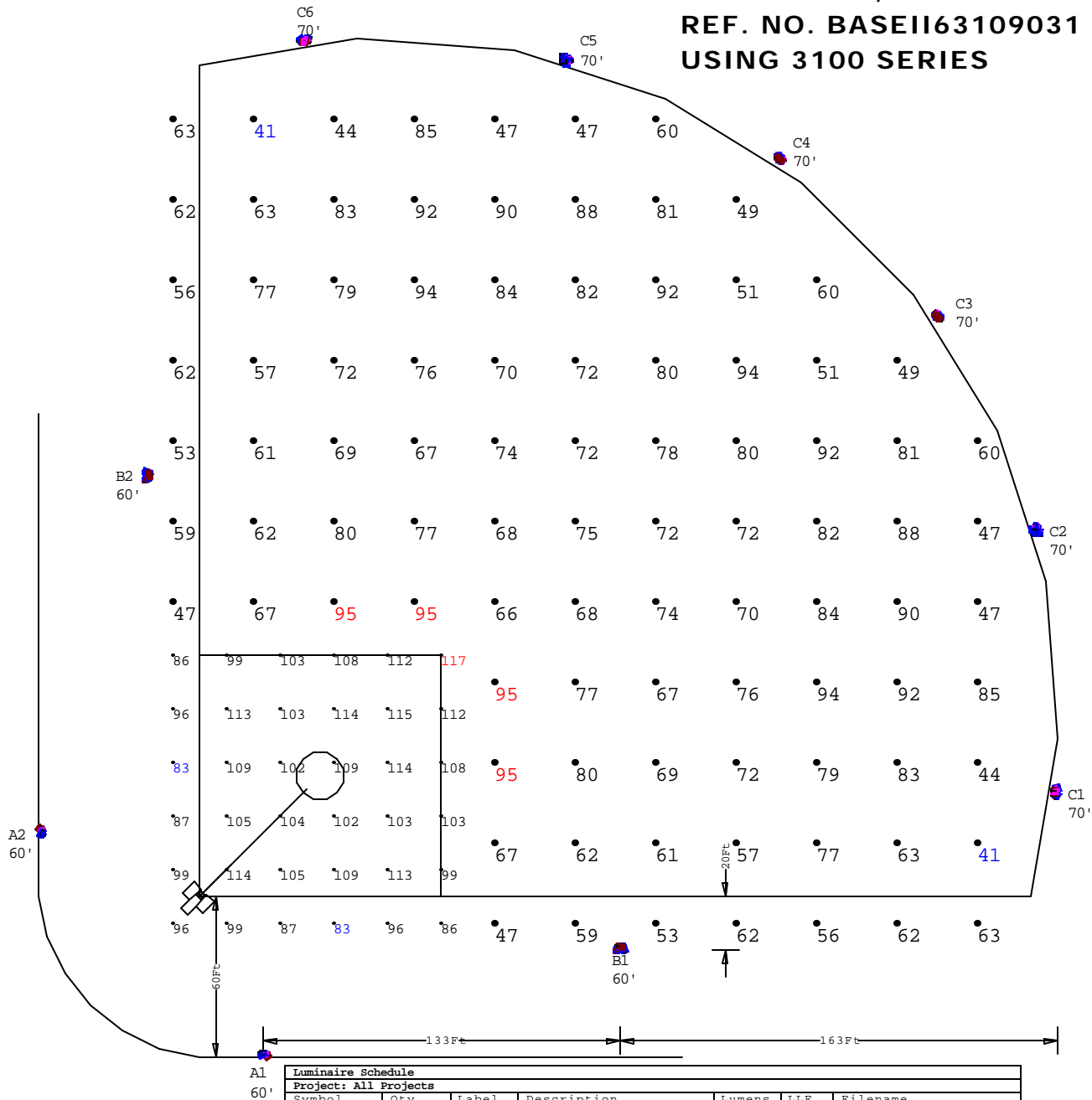


NOTES:

- 1) EXACT MOUNTING DETAILS TO BE DETERMINED AT JOBSITE BY OTHERS.
- 2) CALCULATIONS DO NOT SHOW THE EFFECT OF SHADOWING CAUSED BY OBJECTS WITHIN THE AREA.

**BASEBALL TYPICAL
HIGH SCHOOL LEAGUE
CLASS II, 6 OUTFIELD POLES
310' RADIUS, 90' BASELINE
REF. NO. BASEII63109031
USING 3100 SERIES**



Luminaire Schedule						
Project: All Projects						
Symbol	Qty	Label	Description	Lumens	LLF	Filename
	78	F7	ABS 3100-HM-1000MH	110000	0.720	3100HM1000MH.IES
	32	F11	ABS 3100-HWR-1000MH	110000	0.720	3100HWR400MH.IES
	74	F10	ABS 3100-XN-1000MH	110000	0.720	3100XN1000MH.IES

Numeric Summary										
Project: All Projects										
Label	CalcType	Units	Avg	Max	Min	Avg/Min	Max/Min	# Pt	CV	Description
INFIELD	Illuminance	Fc	102.58	117	83	1.24	1.41	36	0.09	readings taken at 3' afg
OUTFIELD	Illuminance	Fc	70.14	95	41	1.71	2.32	95	0.17	readings taken at 3' afg

View_1:Plan Rotated 0 Tilted 0
Scale: 1 inch= 60 Ft.

ABS LIGHTING- This layout provided using manufacturer's photometrics. Variations between installation and this layout will result in variations from footcandle levels shown.



Fixture Breakdown per Pole

File: BASEII63109031

3100-HM-1000MH	3100-HMR-1000MH	3100-HN-1000MH	3100-XN-1000MH	3100-HWR-1000MH
F7	F8	F9	F10	F11

Pole	Mtg. Ht.	F7	F8	F9	F10	F11
A1	60	6			9	1
A2	60	6			9	1
B1	60	15			13	3
B2	60	15			13	3
C1	70	5			5	4
C2	70	6			5	4
C3	70	7			5	4
C4	70	7			5	4
C5	70	6			5	4
C6	70	5			5	4
Total		78	0	0	74	32